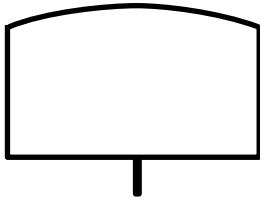
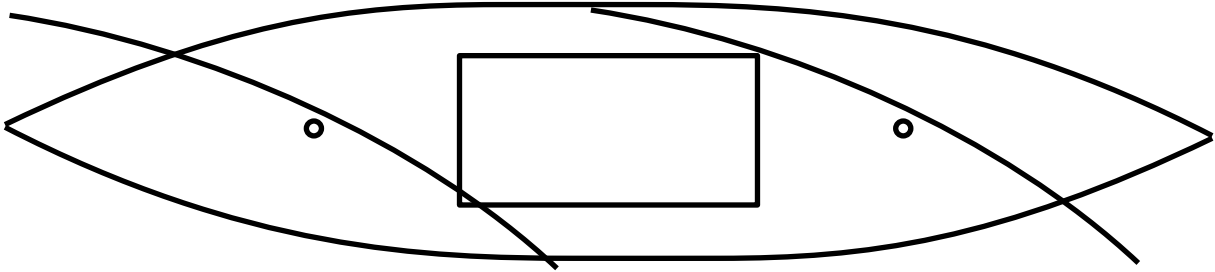


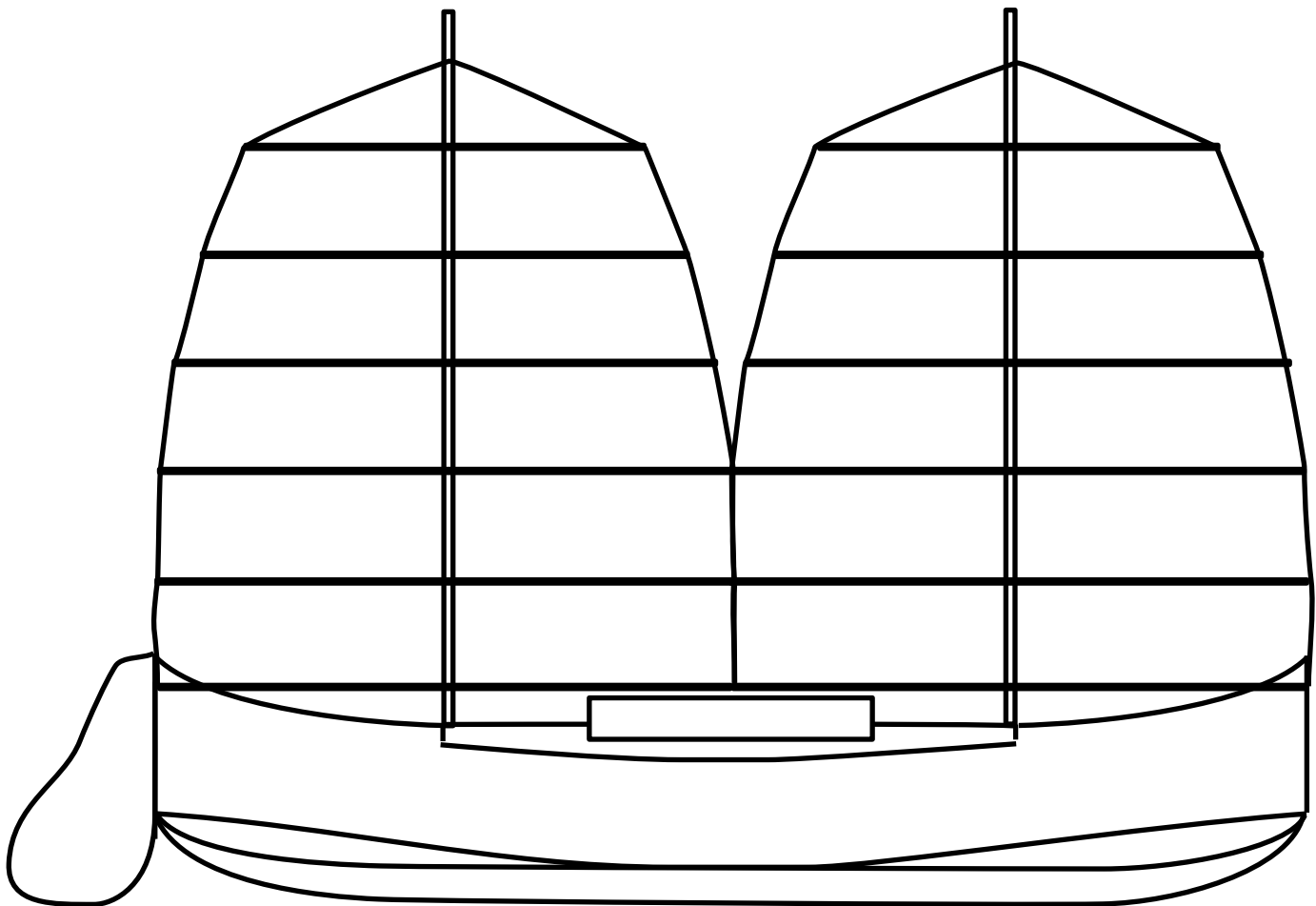
# Initial rough sketch of Micro Brig for the Everglades Challenge.



View of the cross section of the hull at widest beam. Deck is arched for strength while still being light weight, the bottom is twisted to present a V to the waves at bow and stern, taking a page out of a previous entry in the Everglades Challenge, namely the Enigma.



View from above, showing the general outline of the deck, cockpit coming (cabin shape) and sail position when close hulled, showing that it probably should be able to sail about 45 to 50 degrees off the wind.



Side view, showing rigging (as this is a square rig, it will never be straight fore and aft as shown), coming around cockpit (which can be covered with a canvas dodger in warm climates, or raised into a cabin in cold, wet climates), the arched deck between the bulkheads, that the masts are right as the bulkheads, then the raised ends to deal with surf. Rudder shape is not final.